



[http://app.pan.pl/SOM/app65-Muller\\_etal\\_SOM.pdf](http://app.pan.pl/SOM/app65-Muller_etal_SOM.pdf)

## SUPPLEMENTARY ONLINE MATERIAL FOR

### **The first ornithosuchid from Brazil and its macroevolutionary and phylogenetic implications for Late Triassic faunas in Gondwana**

Rodrigo T. Müller, M. Belén von Baczko, Julia B. Desojo, and Sterling J. Nesbitt

Published in *Acta Palaeontologica Polonica* 2020 65 (1): 1-10.

<https://doi.org/10.4202/app.00652.2019>

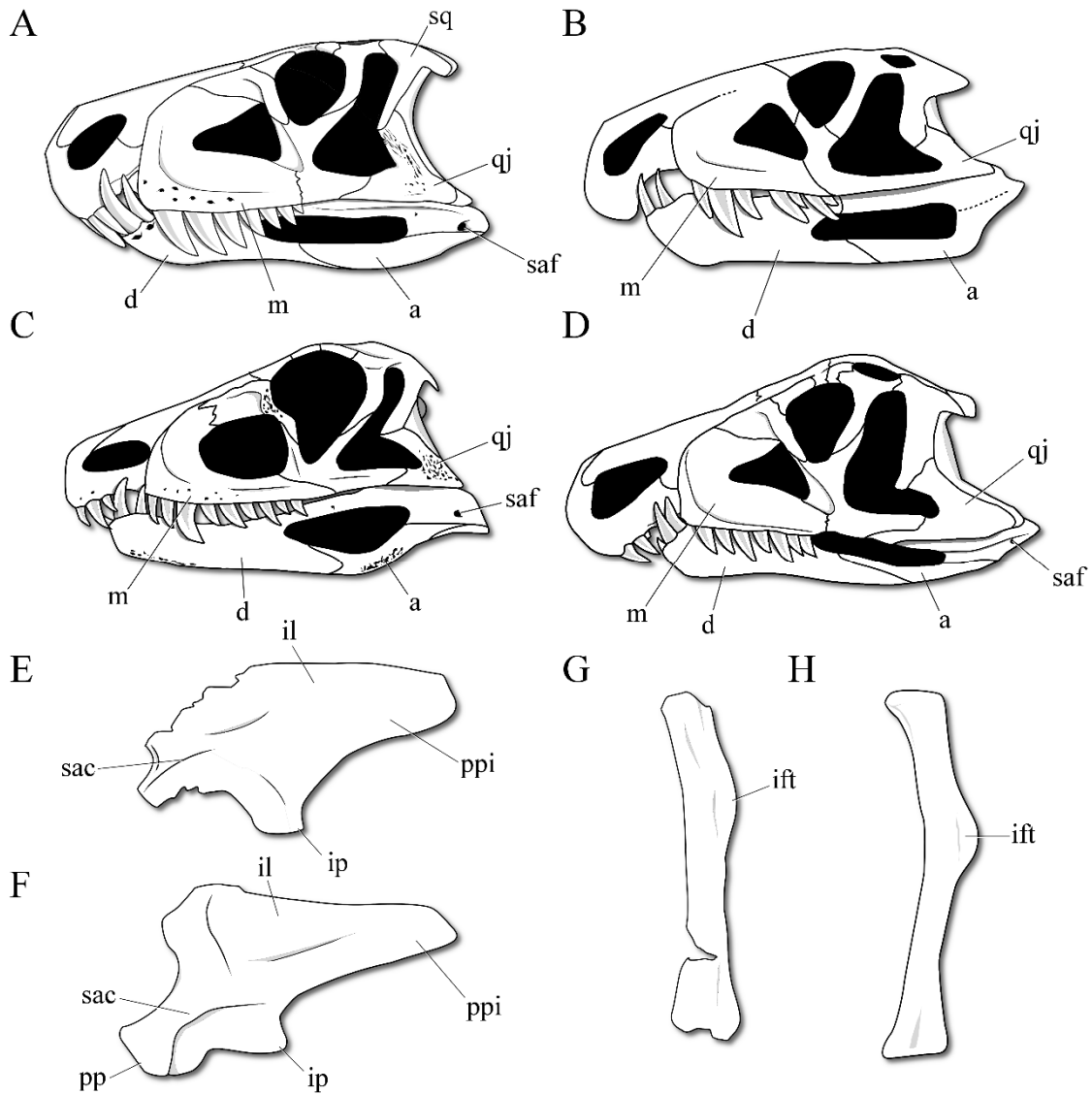
#### **Supplementary Online Material**

##### **SOM Figures**

- S1.** Comparison of selected elements of ornithosuchids.
- S2.** Selected skull parts of *Dynamosuchus collisensis* (CAPPA/UFSM 0248).
- S3.** Selected skeletal parts of *Dynamosuchus collisensis* (CAPPA/UFSM 0248).
- S4.** Life reconstruction of *Dynamosuchus collisensis* by Márcio L. Castro.

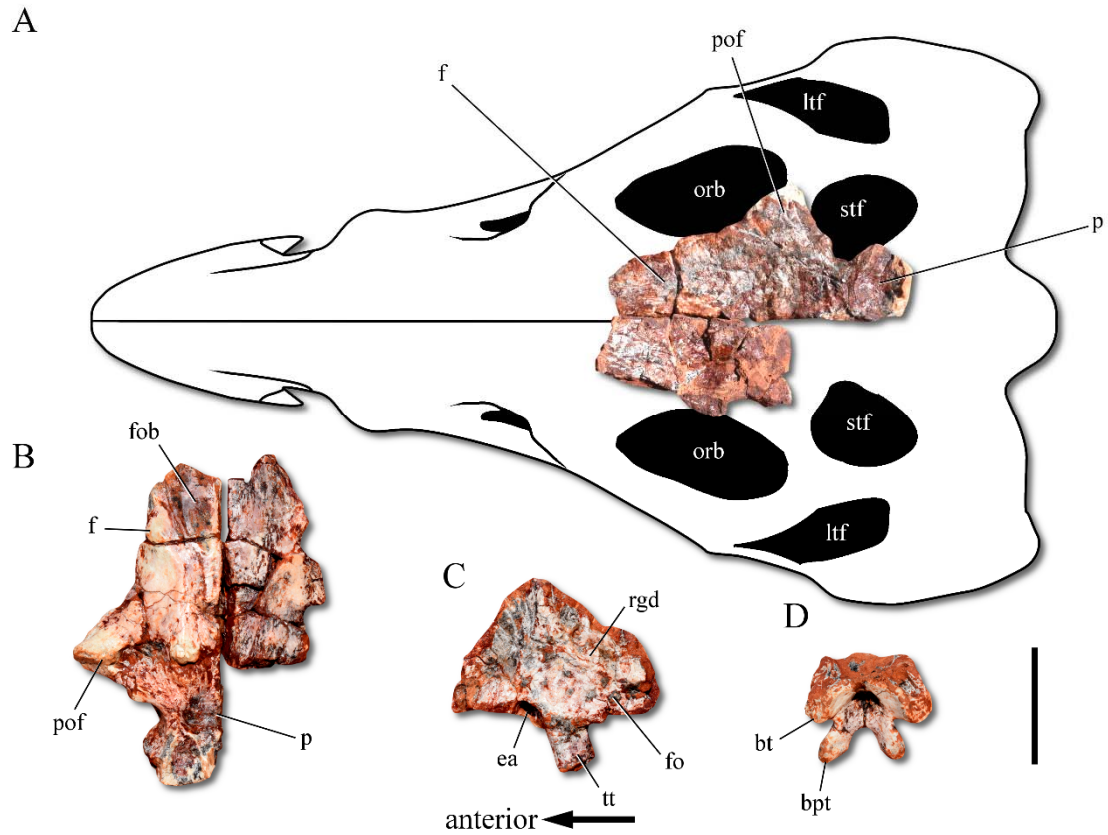
**SOM 1.** Full coding of *Dynamosuchus collisensis* for the data matrix of Ezcurra et al. 2017.

**SOM 2.** Full coding of *Pagosvenator candelariensis* for the data matrix of Ezcurra et al. 2017.

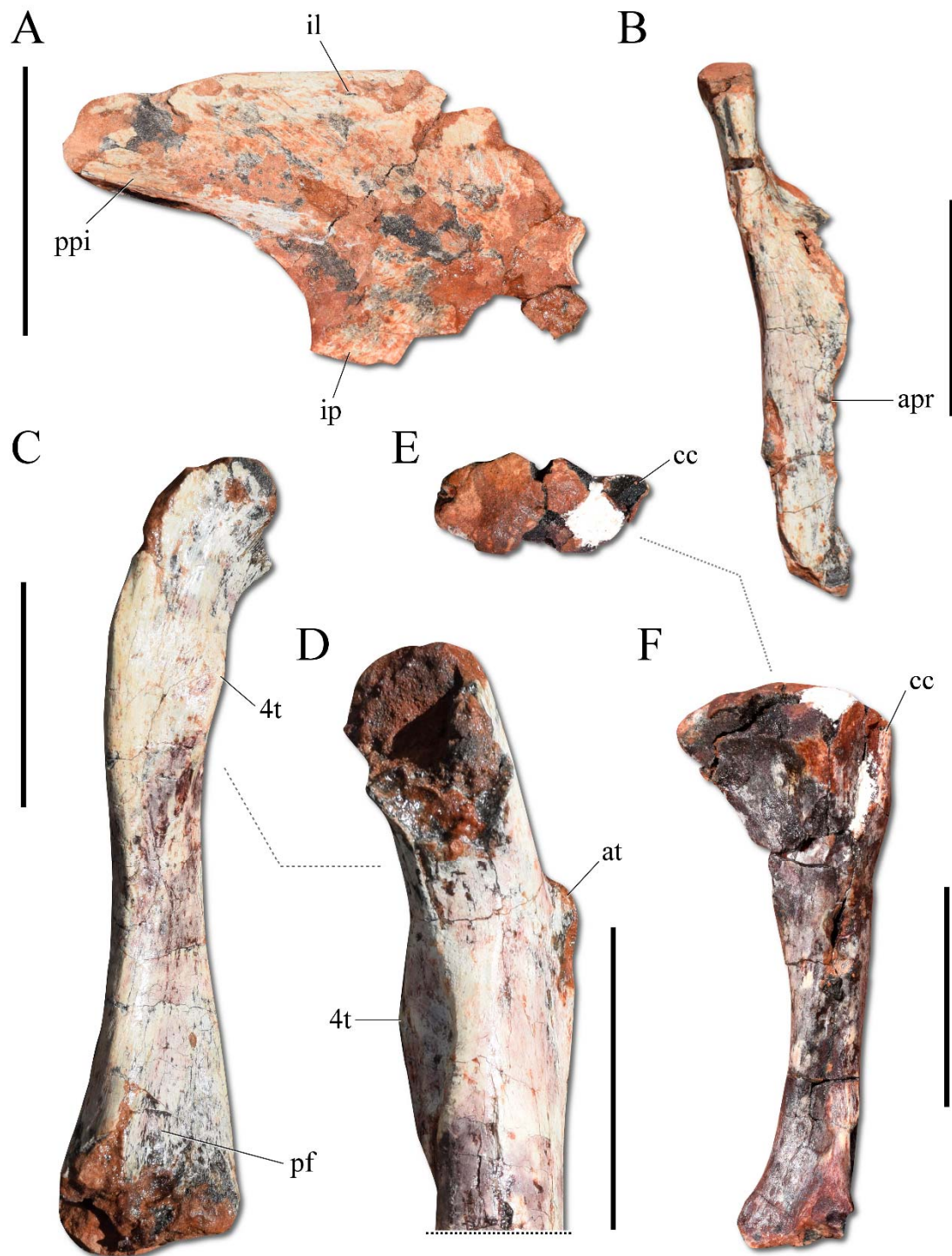


**SOM Fig. S1.** Comparison of selected elements of ornithosuchid. **A.** Skull of *Dynamosuchus collisensis* in left lateral view. **B.** Skull of *Venaticosuchus rusconii* in left lateral view (modified from Baczko 2018). **C.** Skull of *Ornithosuchus woodwardi* in left lateral view (modified from Walker 1964). **D.** Skull of *Riojasuchus tenuisiceps* in left lateral view (modified from Baczko and Desojo 2016). **E.** Incomplete left ilium of *Dynamosuchus collisensis* in lateral view. **F.** Left ilium of *Riojasuchus tenuisiceps* in lateral view (modified from Baczko and Ezcurra 2013). **G.** Left fibula of *Dynamosuchus collisensis* in medial view. **H.** Left fibula of *Riojasuchus tenuisiceps* in medial view (Baczko et al. *In press*). Abbreviations: a, angular; d, dentary; il, iliac blade; ift, iliofibular tubercle; ip, ischiadic peduncle; m, maxilla; pp, pubic peduncle; ppi,

postacebatular process of the ilium; qj, quadratojugal; saf, surangular foramen; sq, squamosal.



**SOM Fig. S2.** Selected skull parts of *Dynamosuchus collisensis* (CAPPA/UFSM 0248). **A.** Partial skull roof in dorsal view. **B.** Partial skull roof in ventral view. **C.** Partial left maxilla in lateral view. **D.** Parabasisphenoid in anterior view. Abbreviations: bpt, basiptyergoid process; bt, basal tubera; ea, empty alveolus; f, frontal; fo, foramen; fob, fossa for the olfactory bulb; ltf, laterotemporal fenestra; orb, orbit; p, parietal; pof, postfontal; rdg, ridge; stf, supratemporal fenestra; tt, tooth. Scale bar = 30 mm.



**SOM Fig. S3.** Selected skeletal parts of *Dynamosuchus collisensis* (CAPPA/UFSM 0248). **A.** Left ilium in medial view. **B.** Right pubis in anterior view. **C.** Left femur in posterior view. **D.** Proximal portion of the left femur in anterior view. **E.** Right tibia in proximal view. **F.** Right tibia in lateral view. Abbreviations: 4t fourth trochanter; apr, apron; at, anterior trochanter; cc, cnemial crest; il, iliac blade; ip, ischiadic peduncle; pf, popliteal fossa; ppi, postacetabular process of the ilium. Scale bars = 50 mm.



**SOM Fig. S4.** Life reconstruction of *Dynamosuchus collisensis* by Márcio L. Castro.

**SOM 1.** Full coding of *Dynamosuchus collisensis* for the data matrix of Ezcurra et al. 2017.

2?00??0??00?1?????????0?11?21000???????1300???????0????1?0??0??21?0??000??  
????????????????????????0?????????????0?10000?00100??????????10?00011000100010?  
?002??011??????????????1?000100??11??  
??????1011?????0000?????????????0013?132?0?11??21?0000010?30?10010?????40100[  
12]1000?1??1?110000?10??20?????0100010?00??1?????000????00????1???1?????  
?00??01??01??0010?????????????????01?0?1??0110121?100111101???????010??  
????0010??0110100?0??1011????????????2??1?????0?1020000011?1??2111000??0?  
1120??21??0??0000??000  
0??????00?????????????????0000??0??????0??0??1?0?????????0???1?0?????00?

