



http://app.pan.pl/SOM/app62-Talanda_SOM.pdf

SUPPLEMENTARY ONLINE MATERIAL FOR

Mateusz Tałanda

Evolution of postcranial skeleton in worm lizards inferred from its status in the Cretaceous stem-amphisbaenian *Slavoia darevskii*

Published in *Acta Palaeontologica Polonica* 2017 62 (1): 9–23.
<http://dx.doi.org/10.4202/app.00294.2016>

Supplementary Online Material

SOM 1.

Figure S1. The CT-scans of axial skeleton of *Slavoia*.

Figure S2. The CT-scans of pelvis, hindlimb, and tail of *Slavoia*.

SOM 2. PCA results.

Figure S1. The CT-scans of the axial skeleton of *Slavoia*. A. The cervical vertebrae with ribs from lateral view (ZPAL MgR-I/112). Abbreviations: R – rib, V – vertebra. B. The trunk vertebrae from dorsal view (ZPAL MgR-I/112). C. The trunk vertebrae from lateral view (ZPAL MgR-I/112). D. The CT-scan of the entire specimen ZPAL MgR-I/112 displaying anterior half of presacral vertebrae.

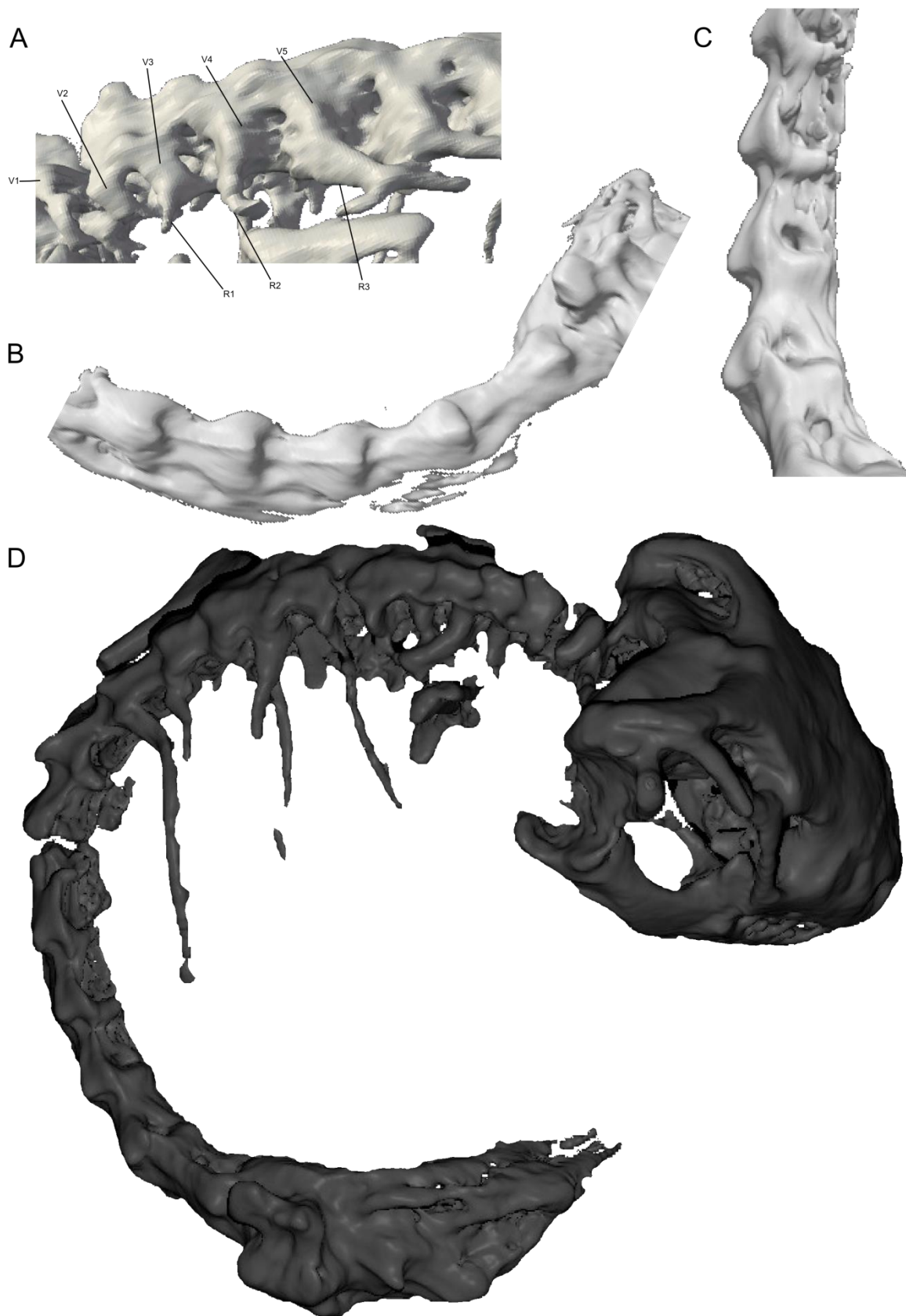
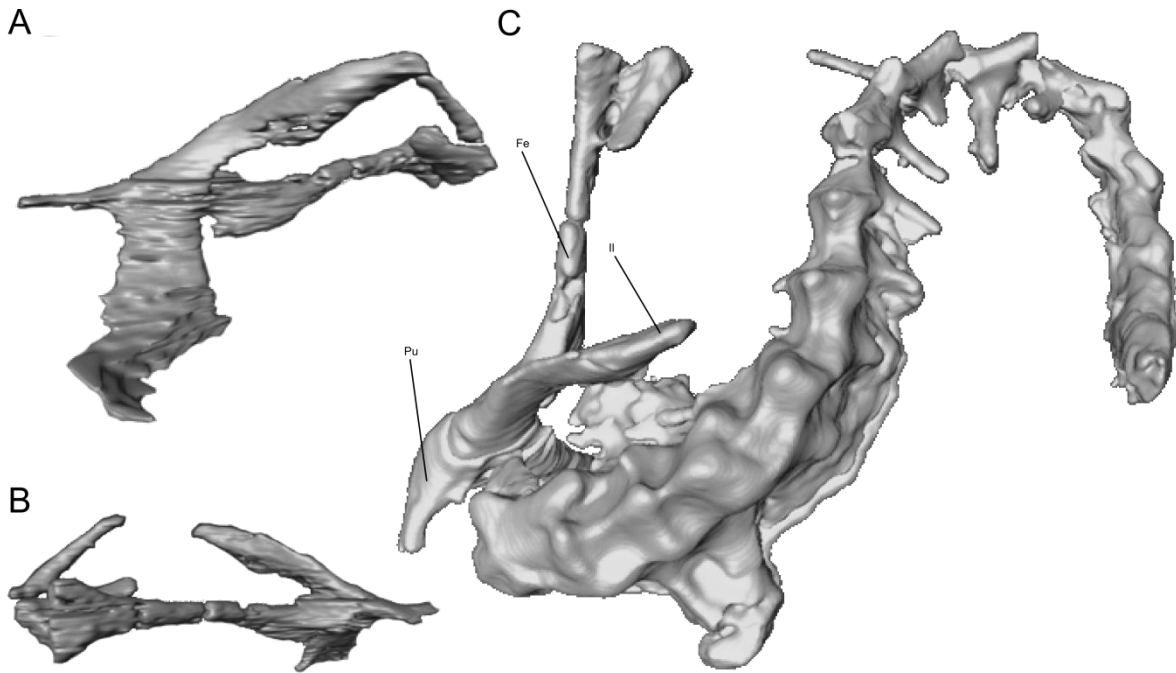


Figure S2. CT-scans of pelvis, hindlimb, and tail of *Slavoia*. A. CT-scan of pelvis and incomplete hindlimb from the medial view (ZPAL MgR-I/8). B. Same from the lateral view. C. The rear of the same specimen displaying the last trunk vertebra, two sacrals, 13 caudals, right side of pelvis, right femur and part of tibia (from dorsal view). Abbreviations: Fe – femur, Il – ilium, Pu – pubis.



SOM 2. PCA results.

Component loadings:

	Comp.1	Comp.2	Comp.3	Comp.4	Comp.5
Fingers	-0.4254	0.5215	0.4996	0.5431	0.05063
Relative_FLL	0.4502	0.4867	0.2946	-0.4354	0.533
Relative_HLL	0.4532	-0.3181	0.7054	0.0525	-0.4394
Relative_SVL	0.4394	0.5801	-0.374	0.1821	-0.5453
Toes	0.4667	-0.2314	-0.1617	0.6926	0.4721

Importance of components:

	Comp.1	Comp.2	Comp.3	Comp.4	Comp.5
Proportion of Variance	0.7656	0.11891	0.058428	0.049135	0.0079288
Cumulative Proportion	0.7656	0.88451	0.942938	0.992073	1.00000