



http://app.pan.pl/SOM/app62-Voegele_etal_SOM.pdf

SUPPLEMENTARY ONLINE MATERIAL FOR

**Osteology of the dorsal vertebrae of the giant titanosaurian sauropod dinosaur
Dreadnoughtus schrani from the Late Cretaceous of Argentina**

Kristyn K. Voegele, Matthew C. Lamanna, and Kenneth J. Lacovara

Published in *Acta Palaeontologica Polonica* 2017 62 (4): 667–681.

<https://doi.org/10.4202/app.00391.2017>

Supplementary Online Material

This supplement provides color figures of photographs of the dorsal vertebrae of the *Dreadnoughtus schrani* holotype (MPM-PV 1156) and paratype (MPM-PV 3546), with anatomical annotations as in the main text. Specimens are presented in lateral (Fig. S1), anterior (Fig. S2), and posterior views.

Fig. S1 Photographs of the seven nearly complete dorsal vertebrae of *Dreadnoughtus schrani* in lateral view. **A**, MPM-PV 1156?-4 (estimated as the ~4th dorsal vertebra); **B**, MPM-PV 1156?-5 (~5th); **C**, MPM-PV 1156-6 (~6th); **D**, MPM-PV 1156?-8 (~7th); **E**, MPM-PV 1156?-9 (~8th); **F**, MPM-PV 1156?-10 (~9th); **G**, MPM-PV 1156-11 (~10th). Dashed lines indicate fractured neural arch laminae. Scale bar equals 50 cm.

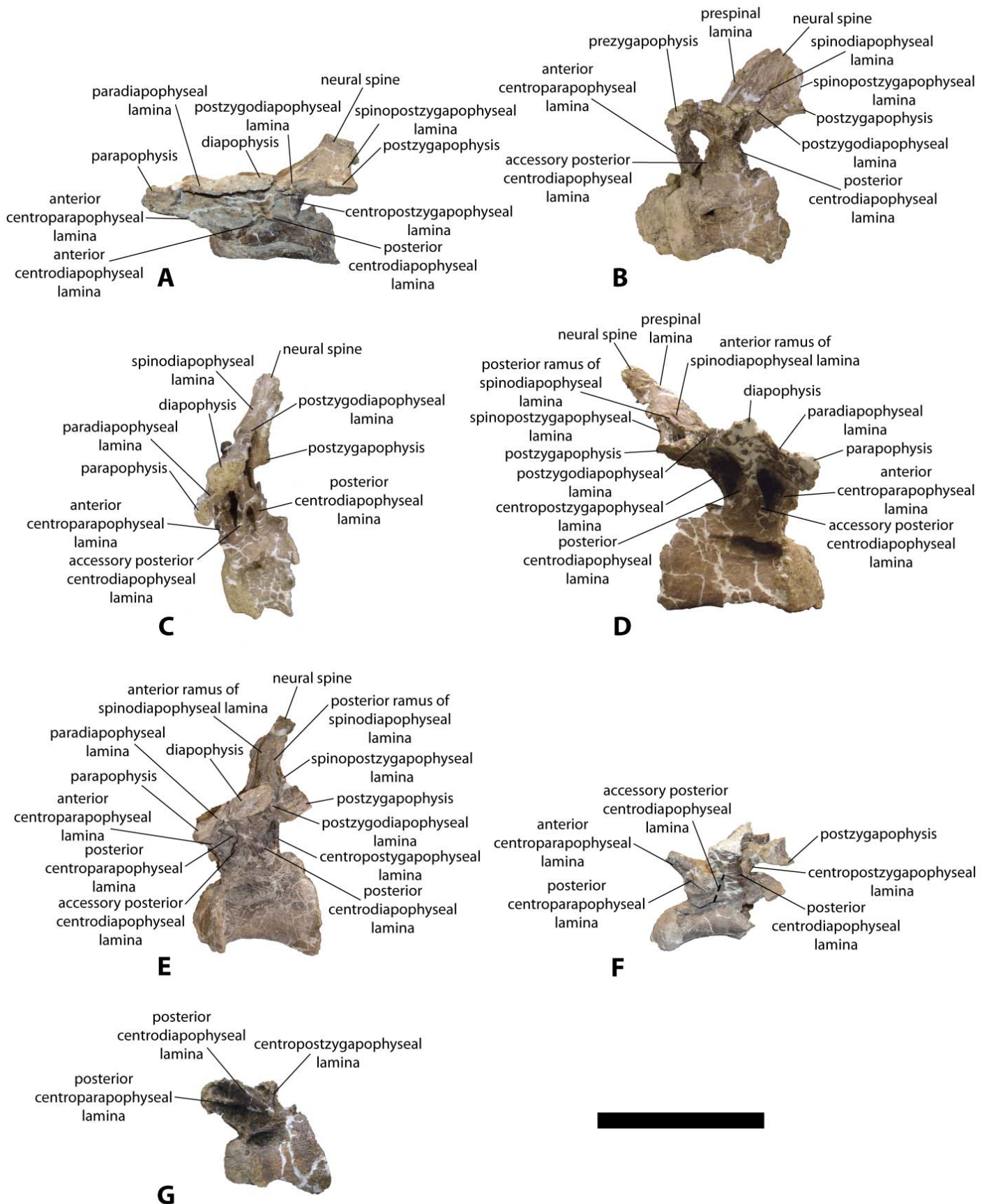


Fig. S2 Photographs of the seven nearly complete dorsal vertebrae of *Dreadnoughtus schrani* in anterior view. **A**, MPM-PV 1156?-4 (estimated as the ~4th dorsal vertebra); **B**, MPM-PV 1156?-5 (~5th); **C**, MPM-PV 1156-6 (~6th); **D**, MPM-PV 1156?-8 (~7th); **E**, MPM-PV 1156?-9 (~8th); **F**, MPM-PV 1156?-10 (~9th); **G**, MPM-PV 1156-11 (~10th). Scale bar equals 50 cm.

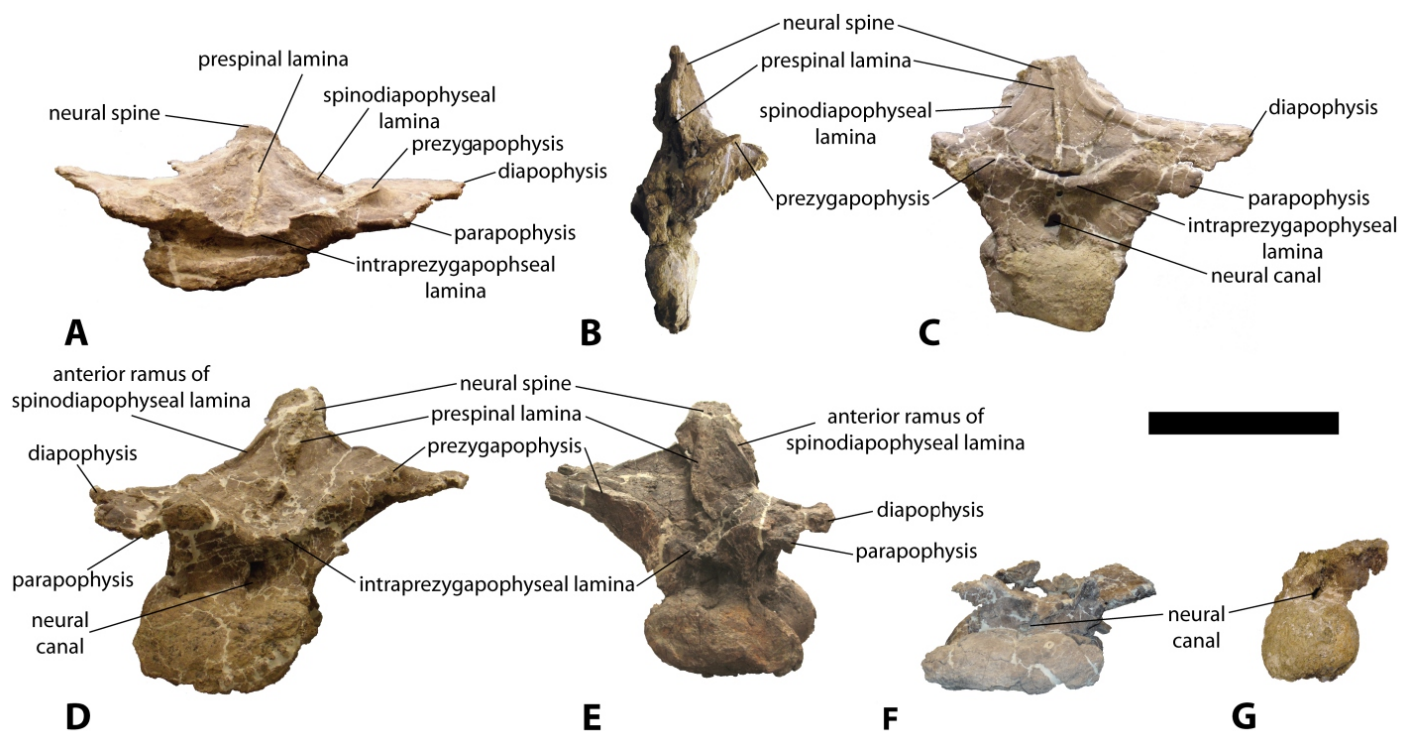


Fig. S3 Photographs of the seven nearly complete dorsal vertebrae of *Dreadnoughtus schrani* in posterior view. **A**, MPM-PV 1156?-4 (estimated as the ~4th dorsal vertebra); **B**, MPM-PV 1156?-5 (~5th); **C**, MPM-PV 1156-6 (~6th); **D**, MPM-PV 1156?-8 (~7th); **E**, MPM-PV 1156?-9 (~8th); **F**, MPM-PV 1156?-10 (~9th); **G**, MPM-PV 1156-11 (~10th). Dashed lines indicate fractured neural arch laminae. Scale bar equals 50 cm.

